

~~9~~
9
D36

F 9
.D36
Copy 1

DE LUXE HOTELS

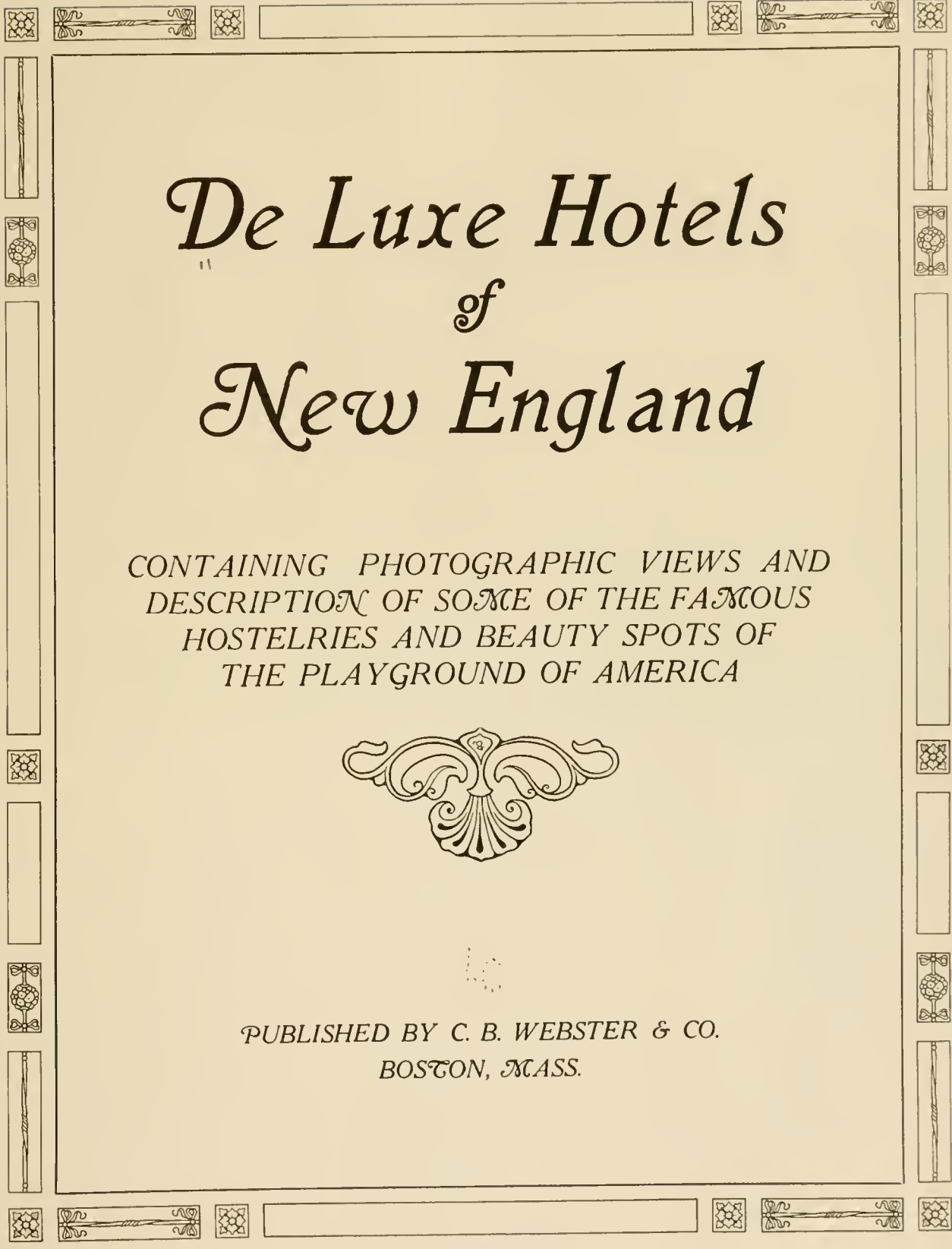
of
NEW ENGLAND



THE LUXE HOTELS

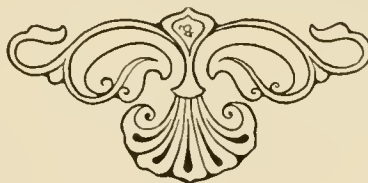
NEW ENGLAND





De Luxe Hotels
of
New England

CONTAINING PHOTOGRAPHIC VIEWS AND
DESCRIPTION OF SOME OF THE FAMOUS
HOSTELRIES AND BEAUTY SPOTS OF
THE PLAYGROUND OF AMERICA



PUBLISHED BY C. B. WEBSTER & CO.
BOSTON, MASS.

F 9
D 30

Copyright 1914
C. B. Webster & Company
Boston, Mass.



\$.30-

© Cl. A 375790

no. 1

JUN 24 1914

new ye.



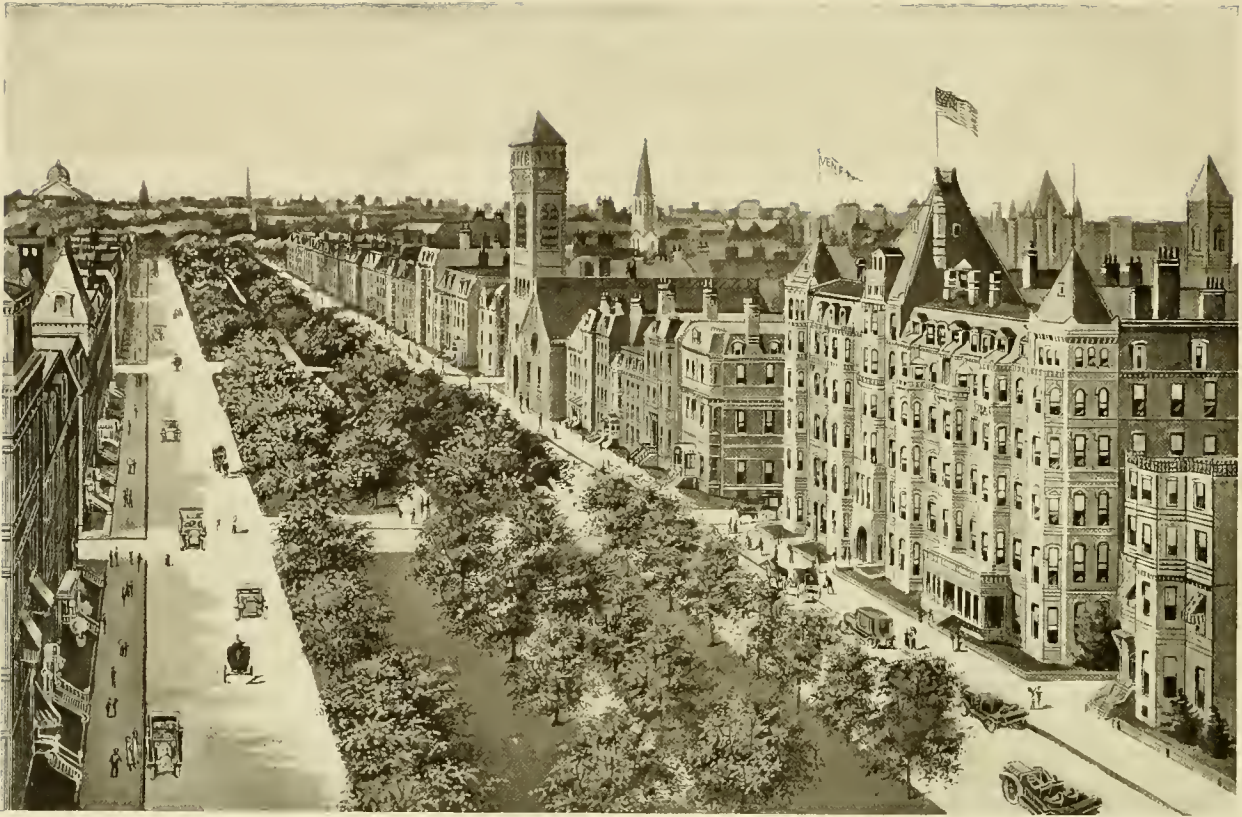
THE COPLEY-PLAZA HOTEL

FACING Copley Square, with the Public Library on one side and Trinity Church on the other, Boston's newest hotel, the Copley-Plaza, undoubtedly enjoys the finest location in this city. The hotel is one block from the Back Bay Stations where all the trains from the West and South stop to take on or discharge passengers. The business, theatre and shopping districts are but a pleasant walk from the hotel and a four minute ride.

Patrons at the Copley-Plaza will find that which is the last word in hotel construction, appointments, service and cuisine, while the charges are most moderate. Our room tariff is as follows:—Single room with bath, \$3.00, \$3.50, and \$4.00; double room with bath, \$5.00, \$6.00, \$7.00 and \$8.00.

For the traveller who desires all that is best in a hotel, yet appreciates that congenial atmosphere which makes a mammoth hostelry like a home, we firmly believe the Copley-Plaza will meet his every need.

The hotel is managed by Mr. Edward C. Fogg recently of the Hotel Belmont, New York City. If you are interested in stopping at the Copley-Plaza, an inquiry will receive our prompt attention.



COMMONWEALTH AVENUE. BOSTON

Among the beautiful highways of the world, Commonwealth Avenue takes high rank. It extends from the far-famed Public Garden, out into the beautiful suburb of Newton. It is restricted to residences only, and for that reason is occupied by numbers of Boston's most beautiful abodes. With its rows of stately trees extending the entire length and the broad promenade through the center it ends most fittingly, as regards this part, in the Fenway, a portion of the Metropolitan Park System. The Hotel Vendome, one of Boston's finest, is shown in the picture.



HOTEL VENDOME

THE HOTEL VENDOME, corner Commonwealth Avenue and Dartmouth Street, Boston, Mass., is one of the largest of the leading hotels in New England. It is away from noise of cars and traffic, yet but one block from car lines and within easy reach of points of interest. The steadfast popularity of the Vendome is due not only to its fortunate location, cool and quiet surroundings, but to its unexcelled clientele. Persons en route to and from summer resorts find it an ideal center from which to enjoy Boston; while as a permanent or transient residence it is equally desirable. The location is especially attractive and convenient for Automobilists touring New England, and much patronized by them. Nearby garages are the best in the city.

C. H. Greenleaf & Co., Proprietors.

White Mountain Hotel, New Profile House and Cottages.



THE FENWAY, BOYLSTON STREET, BOSTON

The natural beauties of the landscape lying along Boylston Street on the borders of Brookline, have been very much enhanced by making a judicious use of the waters of Stony Brook, which flow through this territory, by laying out paths, planting beautiful trees and shrubbery, and finishing the edges of the natural water course. A series of beautiful small ponds have been made, and those in turn have been spanned by very artistic bridges of different designs.

The above photograph shows the section of the Fenway lying between Boylston Street and the Art Museum. Surrounded as it is, by beautiful apartment houses and hotels of the Back Bay, crossed by the Boylston Street Bridge on one end and the Agassiz Bridge at the other, it makes a beauty spot almost in the heart of the city, which is practically undiscoverable until one unexpectedly comes upon it.



HOTEL PURITAN, BOSTON, MASS.

ONE of the most exclusive Boston hotels, is in the fashionable Back Bay district on famous Commonwealth Avenue one hundred yards west from Massachusetts Avenue. It is now within ten minutes by street cars, and with the completion of the Boylston Street Subway in 1914 with its nearby Massachusetts Avenue station, will be but five minutes from the business and shopping district and theatres.

This hotel, patronized by both transient and permanent guests, is equipped after the fashion of a home of the better class, and is a more than ordinarily attractive public house. Its sun parlor is one of the most delightful winter rooms in Boston. Any variety or arrangement of rooms can be had. Valet service is provided and luggage sent on ahead will be unpacked and contents cared for as directed. During the summer, dinner at a fixed price is served in the cool roof garden.

The owners and manager of the Puritan aim to conduct a house which shall meet in every particular the wishes of those who demand the best without ostentation. It is a house of the highest class with modest prices and some globe trotters have been good enough to say it is one of the most attractive and comfortable hotels in the world.



BOYLSTON STREET AND TECHNOLOGY BUILDINGS

Boylston Street, just out of Copley Square, contains the buildings of one of the country's greatest institutes of learning, Massachusetts Institute of Technology, a view of which is shown above.

Adjoining these buildings, stands the Museum of Natural History, containing a very fine collection of birds and animals. Just west stands the new Old South Church, with the Public Library and the beautiful Copley-Plaza Hotel adjoining, and with the famous Trinity Church, completing the four sides of the square. These famous old institute buildings will soon be a thing of the past, as there are now being constructed on the banks of the Charles River in Cambridge, a group of buildings, which, when completed in 1916, will stand foremost among the college buildings of the country.



HOTEL LENOX, BOSTON, MASS.

ON the corner of Boylston and Exeter Streets, just beyond aristocratic Copley Square, and in the center of Boston's finest and newest Back Bay shopping district, is located the above hotel. Electric cars from the subway, pass the door both on Huntington Avenue and Boylston Street, and the Back Bay and Huntington Avenue Stations on the New York, New Haven and Hartford, and the Boston and Albany Railroads are within a minute's walk. It has two hundred and fifty guest rooms, each one of which has an outward exposure and is connected with bath. Electric light and telephone service are in every room. The hotel has a restaurant service without an equal in New England.

This hotel is owned by and conducted under the management of the Associated Trust.



AGASSIZ BRIDGE

The Fenway section of the Metropolitan Park is noted for the beautiful bridges which span the streams running through it. Among them, the one portrayed above is considered the most beautiful. Overhung as it is with ivy and trailing vines, and constructed out of natural stone, arched in a most pleasing form, it makes a setting for the surrounding scenery which is well nigh perfect.



HOTEL BUCKMINSTER, BOSTON, MASS.

STANDING at the junction of Beacon Street and Commonwealth Avenue, this hotel, one of the finest in Boston, has a location with few superiors.

The hotel is fitted in the extreme of elegance throughout, with elevators, electric light, steam heat, the finest of rooms, all en suite, with private bath, ample corridors, a fine and spacious lobby, and a dining room the appointments and service of which leave nothing to be desired.

This hotel is built and conducted to cater to the tastes of people who desire the very highest class of service and appointments, and to whom the comfort thus afforded, means more than the expense attached thereto.

The Commonwealth Avenue entrance to the Boylston Street Subway is within one hundred yards of the hotel, bringing guests within five minutes of Park Street and the Cambridge Subway. Surrounding the hotel are the famous drives through the Metropolitan Park System, which is without a superior in the world, and where one can drive for forty miles in one direction without leaving the park.

This hotel is owned by and conducted under the management of the Associated Trust.



THE BEACH AND GALLOUPE'S POINT, SWAMPSCOTT, MASS.

THESE views of Swampscott show a little of the natural beauties of this charming summer resort. Situated as it is, contiguous to the Colonial history shrines of Salem, Danvers and Marblehead, it is one of the most popular tourist spots in New England. These views are in immediate proximity to the New Ocean House.

E. R. Grabow Company, Owners-Managers,
Executive offices, 673 Boylston Street, Boston.



GARAGE DRIVEWAY



PURITAN ROAD



THE NEW OCEAN HOUSE AND COTTAGES, SWAMPSCOTT, MASS.

SITUATED in one of the most beautiful of Boston's suburbs, this hotel, ranking among the first in New England, presents to its guests every combination which man and nature could devise for their comfort; fitted throughout in the finest manner, with steam heat, elevators, the finest of rooms, single and en suite, luxurious bath rooms, bowling, billiards, golf, tennis and croquet.

It has a private bath-house on the beach for the use of guests, the finest of automobile roads, and, being adjacent to the famous historical towns of Salem, Danvers and Marblehead, nothing more could be left to minister to the comfort and pleasure of the visitor within its walls.

Address E. R. Grabow Company, Swampscott, Mass.





BEACH BLUFF, MASS.

Lying between Swampscott and Marblehead Harbor, is the beautiful stretch of beach shown in the above picture. This beach which extends from the water's edge to a high bluff rising at its back, is flanked by some of the most beautiful cottages on the North Shore, and dominated by one of the finest hotels. It is one of the most charming beaches along the entire stretch of coast, and a source of great enjoyment to the summer visitors throughout the entire season.



HOTEL PRESTON AND COTTAGES, BEACH BLUFF, MASS.

Personal Management of J. A. Sherrard, Proprietor

HOTEL PRESTON is situated at Beach Bluff, one of the most delightful spots on the North Shore of Massachusetts.

The hotel is an imposing structure surrounded by a wide veranda. From three sides are superb views of the ocean; ("Boston Light, Minot's, and the Graves," are visible).

Modern in construction, Hotel Preston has facilities for three hundred guests and caters to a discriminating patronage who demand and appreciate the best in cuisine, service and modern methods of hotel operation. The sleeping chambers are most attractive, all having outside exposure; and apartments may be arranged either singly or en suite, with or without attached bathroom. The three cottages connected with Hotel Preston are provided with the same modern equipment found in the hotel, including private bathrooms, steam heat, electric lighting, etc.

An ideal beach for bathing, free from undertow, rocks and drift matter, directly in front of the hotel, extends for a mile in either direction. The new Bathing Pavilion is provided with showers and other conveniences, a competent swimming instructor being in charge.

The roads being unequalled for automobiling and driving, this is one of the chief features of this section. Hotel Preston garage is in charge of a competent mechanic, and all automobile accessories are kept in stock. There is also a livery connected with the hotel, safe driving and saddle horses being always available.

Gedney Farm Hotel, White Plains, N. Y. under same management.



SURF ON CAPE ANN

Of all the wild and rocky shores for which New England is famous, none probably presents more picturesque spots to the eye of the artist and nature-lover, than rugged old Cape Ann. Standing as it does, farther into the ocean than almost any other point between Eastport and New York, and dominated at its outer extremity by Thatcher's Island lights, two of the most famous beacons of the coast, it receives the full sweep of the North Atlantic surges. Here the sea beats ceaselessly, and the display of surf, even on the quietest of summer days, is beautiful beyond conception. The above photograph presents a picture of its power when in a stormy mood, a sight which the dweller in the western part of our country never forgets when he has once seen it.



THE TURK'S HEAD INN, ROCKPORT, MASS.

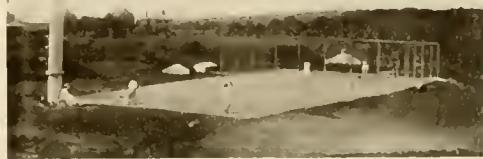
The Inn is located on the extreme point of Cape Ann, 42 miles north of Boston. State road the entire distance



THE ROCKY COAST



THATCHER'S ISLAND LIGHTS



TENNIS COURT



THE BATHING BEACH



THE COTTAGES



THE GARAGE



BASS ROCKS, GLOUCESTER



THE BASS ROCKS GOLF LINKS



HOTEL MOORLAND, BASS ROCKS, GLOUCESTER, MASS.

ON the bold shore of Cape Ann, in full view of the famous Thatcher's Island lights, stands this, one of the first hotels in New England, with the cottages attached. It furnishes a variety of accommodations to suit any taste. Golf links, tennis, rooms single and en suite, also with private baths, every accommodation is here offered. The hotel is electrically lighted, has a commodious dining room, with an unexcelled table, ball room, card room, and is within easy reach of the famous historical places of the North Shore.

Magnolia and Manchester with their beautiful summer homes, Marblehead, with its beautiful harbor, and its wealth of historical houses, lies to the south, beautiful with pleasure yachts in the season. Not far away is famous old Salem, home of Hawthorne, and the scene of New England's witchcraft delusion. Danvers, the home of Israel Putnam, and quaint Portsmouth and Kittery, replete with colonial shrines, are all within easy reach.

The finest of automobile roads will here be found, and the guest must be hard to please who will not be suited.



THE WALBACH TOWER, NEW CASTLE, N. H.

Portsmouth and New Castle are two of the most beautiful historic places in New England, and contain some of the finest relics of Colonial times. Among them are the Old Gov. Wentworth House, Gov. Ladd House, Gov. Langdon House, Old St. John's Church, the Bos'n Allen House, Old Fort Constitution and the Old Walbach Tower, an illustration of which is here given. Across the river lies Kittery, Maine, equally prominent historically, containing Old Fort McCleary, the Kittery Navy Yard and numerous other historical shrines. The entire country around is covered by beautiful automobile roads, and in summer this section is one of the great resorts for visitors from all over the country.

Running through the city is the beautiful Piscataqua River, so deep and broad that full size ships of the Navy can come up to the docks at Portsmouth.



HOTEL WENTWORTH NEW CASTLE-BY-THE-SEA, PORTSMOUTH, N. H.

THE Gem Spot of the Ideal Tour to Maine and the White Mountain Resorts. No hotel on the Atlantic coast is more notable for beauty of location, attractiveness of surroundings, perfection of service, class of patronage, and social prominence than

HOTEL WENTWORTH.

Every facility for out-door sport and recreation; appealing especially to devotees of golf, tennis, boating, fishing, bathing, riding and driving, with a well-equipped garage under competent supervision and a splendid livery. New Hampshire's social, historic and scenic center. Orchestra made up principally of Symphony artists. For free descriptive and illustrated booklet address H. W. Priest, Manager.

Winter Resort, The Carolina, Pinehurst, N. C.



SURF AT YORK, MAINE

The Maine Coast has always been noted for its cliffs and surf, and York has always been a favorite spot to witness the combination. From the Nubble to Bald Head Cliff is one succession of bold headlands, against which the sea beats continuously. Even in the calmest weather, it is beautiful, and after a storm it is grand indeed. The above picture shows a little of its beauty after a storm.



YOUNG'S HOTEL, YORK BEACH, ME.

ONE of the most pleasant and commodious hotels on the north shore, situated on Union Bluff, fifty feet above sea level, commanding a full view from its broad piazza, of York Beach and the broad peninsula sweeping to the Nubble Lighthouse. Every facility is here afforded for the entertaining of guests, including a large music room for dancing, a reception room and parlor with fireplaces and the very latest fittings as regards electric lights and electric bells, bath rooms with hot and cold water and all bed room furnishings. It is a favorite resort for automobilists who will find the finest of roads extending in every direction. Base ball sports, York Country Club and easy access to Ogunquit, Wells Beach, Kennebunk, Old Orchard and Portland make it more than unusually attractive. Four mails each way daily, with six trains each way and trolley cars every half hour, two and one-half hours ride from Boston or Portland and seven hours from New York.

J. F. Young, Proprietor.



ECHO BRIDGE, NEWTON LOWER FALLS

Spanning the beautiful Charles River, made famous in song and story by the Poet Longfellow, and now the great summer resort of canoeists by the thousand, rises the beautiful Echo Bridge. The bridge, which is not a bridge in the true sense of the word, but simply a stone viaduct for carrying one of the great water mains which supplies the City of Boston, is a marvelous thing of beauty, both from the grace of its lines and the solidity of its construction. Standing in the arch on either side, a most remarkable echo is obtained, thrown back and forth across the river a number of times, from which arises its name. A section of the Metropolitan Park embraces this bridge, and beautiful paths and recreation benches surround the banks on both sides of the river which it spans.



WOODLAND PARK HOTEL, AUBURNDALE, MASS.

IN beautiful Auburndale, one of Boston's finest suburbs, is situated this charming hotel, in the midst of ten acres of shady trees and velvety lawns. Modern in all respects, it embodies every comfort desired, including electric light, steam heat and fireplaces, with a most delightful sun piazza, completely glassed in, and, with a cuisine of unusual excellence, it will meet the approval of the most fastidious. Adjoining the hotel is a fine Casino, containing Bowling Alleys and a Billard Hall, large stables, convenient Auto Garage, well-kept Tennis Courts, Croquet Grounds and the Golf Links that expert golfers tell us are the finest in the vicinity.

A half mile walk brings you to the Riverside Recreation Grounds by the historic Charles River, where is situated the Newton Boat Club and the river home of the noted Boston Athletic Association. Better equipped grounds for fresh water Swimming and Bathing, Canoeing and Baseball cannot be found. The roads around are the finest in the world for automobiles, and all the historic points around Boston are within easy driving distance.

Harry T. Miller, Prop. Telephone Newton West 21941.

Electric cars leave Park Street Subway for Auburndale every fifteen minutes. Leave cars at corner Commonwealth Avenue and Washington Street. Three minutes walk to the House. Newton Boulevard cars pass the door.



OLD MAN OF THE MOUNTAIN



THE FLUME

Enwrapped in rich foliage, bright with many waters, and abounding in singular rock-sculptures, Franconia Notch makes an unique appeal to all lovers of the beautiful and picturesque.

The supreme jewel of this treasury of Nature is the great stone face, the world-renowned Profile, undoubtedly the most remarkable rock formation in this country, if not in the world. 1200 feet above Profile Lake.



A CORNER OF ECHO LAKE



THE PROFILE HOUSE

SITUATED in the White Mountains. Open July 1st to September 25th. Altitude 1974 feet. This new hotel, with twenty cottages, comprises one of the largest and best equipped of leading summer resorts. Unexcelled in location—Patronage of the Highest Order. The estate of the Company, containing six thousand acres of land, extends for nine miles through Franconia Notch, making a magnificent preserve, unsurpassed for rare picturesque beauty and interest.

Associated with The Ideal Tour—most convenient for automobile parties and largely patronized by them. Best train service (day and night) between New York, Boston and Eastern cities.

Profile & Flume Hotels Company, C. H. Greenleaf, President. Affiliated City Hotel, The Vendome, Boston.

THE FLUME HOUSE

CONDUCTED on the European Plan. Capacity, 150 Guests.

Beautifully situated at Southern Entrance of Franconia Notch. Altitude 1450 feet. On The Ideal Tour—State Highway—25 miles north from Plymouth, N. H.—5 miles south from Profile House. Hundreds of visitors come here each year to visit the Famous Flume.

American Plan for permanent guests if desired. To accommodate early and late motorists the Flume House will remain open from June 20th to October 15th.

Address, Flume House, N. H. S. H. Bigelow, Manager.



ONE OF THE WHITE MOUNTAIN WATER FALLS

The summer visitor to the White Mountains cannot fail to be attracted as he drives along the roads, by the great number and beauty of the Water Falls which will be seen in every direction. They constitute in fact, as much a part of the landscape as do the mountains themselves, and a number of them have been made famous in song and story by prominent men of the past. Wherever you go through the Crawford Notch, through the Franconia Notch or around the Intervale country, these beautiful falling sprays of water greet you in every direction.

The above view portrays one of them, and shows in a feeble way, what the charm of the actual stream itself must be.



THE SINCLAIR HOTEL, WHITE MOUNTAINS, N. H.

Remodeled, Refurnished, Enlarged

SITUATED in one of the most delightful spots in the heart of the White Mountains, is Bethlehem, the Wonderland of New England. It is today absolutely modern in all its furnishings. Its patronage is drawn from every part of the country and it stands foremost among the resort hotels in every respect.

The Golf Links of Bethlehem Country Club are in close proximity to the hotel and are available to the guests. A perfectly appointed up-to-date fire-proof garage in connection with the hotel, with separate stalls for cars, has every requisite for motoring and motor repairing on hand. All sporting attractions including tennis, baseball, croquet, music and dancing. Cozy card rooms for those who desire them.

The hotel has hydraulic elevator service, is lighted by gas and electricity, is steam heated, and has sixty suites with bath attached, the balance of the rooms having running hot and cold water. The house has broad piazzas extending on every side which are used as assembling places for guests as well as promenades for the evening or during inclement weather.

The hotel has accommodations for three hundred guests, opening about June 26th and continuing into October. For circulars and information address Harrington & McAuliffe, White Mountains, Bethlehem, N. H.

After December 1st until April 15th, W. McAuliffe, Manager of the Hotel Alcazar, St. Augustine, Fla.



A ROADWAY IN THE WHITE MOUNTAINS

Covering the entire country from Intervale, northward, is a network of beautiful highways winding in and out of the valleys, for which this section of the country is famous. The view shown above portrays a delightful turn in one of the roads traversing this section, and which will be found at almost any point where one may happen to be driving.



MAPLEWOOD HOTEL, MAPLEWOOD, N. H.

ON a magnificent plateau in the heart of the White Mountains, is located the Maplewood, with its Cottages, Casino and one-thousand acre Park and Farm. Here one will find all the elements of nature and civilization that go to make up an attractive spot suited to any taste. Golf, tennis, motoring, trap-shooting, fishing, driving, riding and mountain climbing, fill up the time of the visitor, with endless delight.

The hotel is fitted throughout with every convenience and comfort desired by guests. It is within easy reach of the most interesting points of the White Mountains, including the famous Crawford Notch. The drive through Franconia Valley to Echo Lake and through Profile Notch to the Flume affords a never-to-be-forgotten variety of magnificent mountain scenery. The mountain views from all parts of the golf course are indescribably beautiful. The fisherman will find some of the finest trout fishing within easy reach of the hotel.

The roads are the very finest for automobilists, and trained saddle-horses for horse-back riding, under a competent teacher, can be obtained at short notice.

The hotel is fitted throughout, with the finest of rooms, single or en suite, with private baths attached when desired, electrically lighted and steam heated throughout, billiard rooms, dance hall, fully equipped theatre, and a liberal supply of the finest dairy products from Maplewood Farm.

Maplewood has its own railroad station within easy walking distance of the hotel. Arriving and departing guests have free conveyance to and from the station, and baggage is transferred without delay.

Maplewood Hotel Co., Leon H. Cilley, Manager.



PRESIDENTIAL RANGE AND AMMONOOSUC RIVER

One of the most beautiful view points of the Presidential Range in the White Mountains is afforded in the photograph shown above. The clear stream in the foreground, with its charming wooded banks gradually fading away in the middle distance, to the towering summits which dominate the range, presents a picture which is admired every year by thousands of travelers from all parts of the country.



THE MT. WASHINGTON HOTEL, BRETTON WOODS, N. H.

LOCATED as it is on a beautiful plateau, commanding a magnificent view of Mt. Washington and the Presidential range, few hotels can present to the visitor, a more beautiful location than this.

Steam heat, electric light, elevators, rooms arranged in any way to suit the convenience of guests, golf, tennis, baseball, combined with a beautiful ball room, nothing more can be desired. Added to this are the beautiful roads for automobiling, bringing one within easy reach of all the beauty spots of the mountains, and with easy access to all the paths and trails on the mountains. The visitor to this charming spot will never regret it, but return the next year, to find new beauties undiscovered before.

Surrounding the hotel are the gems of the White Mountains, comprising in addition to the giants of the Presidential range, Clinton, Webster, Willey, Willard, Lafayette and other lesser peaks, but all with a charm of their own.



Courtesy B. & M. R. R.

MT. WASHINGTON FROM INTERVALLE

No spot in the White Mountains is more pleasant to contemplate, or more grand in its appearance, than the view shown above. A photograph can but feebly show the actual grandeur of the scene. The noble elms in the foreground and dotted through the Intervale which terminates at the foothills, rising one behind the other, each a little higher than the one in front, finally culminating in this famous peak, all combine to make a picture which has been praised by writers and pictured by artists from time immemorial.



THE INTERVALE HOUSE INTERVALE, (WHITE MOUNTAINS), NEW HAMPSHIRE

THERE is no more beautiful spot in the White Mountains than Intervale, and no finer hotel than the Intervale House. Situated as it is at the proper focal point to view Mount Washington, this giant of the range, looming in solitary majesty above the beautiful intervalles directly in front of the hotel, can be seen here as at no other place. To the right stands Mt. Kearsarge, often called the most beautiful in New Hampshire, easy of access, and commanding an unobstructed view. Nearby are the impressive Cathedral Woods coming down almost to the hotel grounds, and within easy reach by automobile are Poland Springs, the circuit trip around the mountains via Crawford Notch and return via Profile, and to Chocorua, Chocorua Lake and Lake Winnepesaukee. The hotel has every convenience for the comfort of guests, including rooms single or en suite, lighted by electricity, bath rooms, steam heat, telephone and telegraph, and pure spring water. An automobile livery connected with the hotel provides cars at any time at reasonable rates. The hotel maintains a fine livery stable, with every kind of driving outfit for the use of guests. A garage connected with the house, provides every facility for the automobilist. Two cottages connected with the house, having thirty-five rooms, provide for parties desiring more quiet than the hotel proper would afford. For amusements the hotel has lawn tennis courts, croquet and ball grounds, and a fine orchestra for music and dancing. Opens late in June till October.

Herbert S. Mudgett, Proprietor.



CATHEDRAL PINES, NO. CONWAY, N. H.

Noted throughout the White Mountains are these beautiful Pines, a small section of which is shown in the above photograph. Stretching along the country side for miles, in all their original beauty, they are noted amongst all tourists to the White Mountains, and a day never passes when they are not visited by a large number of the admirers of Nature.



THE KEARSARGE NORTH CONWAY, WHITE MOUNTAINS, N. H.

THE KEARSARGE is situated in a peculiarly attractive part of the White Mountains, to the south and east of the Presidential Range. Not only is it one of the most famous and luxurious of the big hotels of this region, but it is within easy automobile distance of all points in the White Mountains as well as of Western Maine and the picturesque region of Lake Winnepesaukee and central New Hampshire.

Almost at the doorstep of the hotel rise the wooded slopes of Mount Kearsarge. Across the Saco Valley westward are the picturesque Ledges, and beyond them the profile of Moat Mountain.

The mountain air of North Conway is pure and bracing and there are opportunities for every kind of outdoor sport. The golf course is exceptionally fine. The tennis courts are kept in the best of condition while excellent swimming and fishing may be had not far from the hotel.

The Kearsarge is thoroughly modern. There are private baths, electricity and an elevator to the upper stories. The Kearsarge has every day fresh vegetables and fruit from its own farm and the excellence of its table has always been a source of special pride.

Raymond & Whitcomb Co., Proprietors. J. L. Gibson, Manager.



BATHING HOUR, NORTH SCITUATE BEACH, MASS.

Eleven o'clock in the forenoon at North Scituate Beach is the time when the population take their daily plunge in the ocean, and the above picture shows the activity of the beach on an ideal summer forenoon. This beach four miles in length, extending from Scituate Harbor to Minot's Light, is one of the most popular spots on the South Shore, and on a pleasant Saturday in August, is thronged with bathers making a sight well worth witnessing.



THE CLIFF HOTEL AND COTTAGES NORTH SCITUATE BEACH, MASS.

THE Cliff Hotel and Cottages are delightfully situated on a bluff commanding a view of the Atlantic from Cape Ann to Cape Cod, and surrounded by some of the most beautiful scenery on the South Shore.

The hotel is steam heated and has large connecting parlors, smoking, writing rooms and a reading room. The dining room has seating capacity for two hundred with an additional one for children and nurses. The hotel has seventy-five large and airy guest chambers, all commanding a view of the ocean. They are completely furnished with every comfort that guests can desire.

Within easy reach of the hotel are the wonderful "Glades," the Jerusalem Road to Nantasket and a State road to Plymouth, including Daniel Webster's home in Marshfield and all the scenes connected with the "Old Oaken Bucket." In full view is the old town of Scituate and the famous Minot's Ledge Light. A short distance behind the hotel is the golf-links of the Hatherly Playground, with tennis courts connected, one of the most delightful courses on the South Shore. Guests are welcome to membership at any time.

Automobile garage and service is connected with the hotel and at the command of the guests.

The hotel is two miles from North Scituate Depot and twenty-two miles from Boston.

For Reservations, Address E. S. Wiltbank, Manager Cliff Hotel and Cottages, Post Office, Minot, Mass.



MARION HARBOR, MASS.

Among the beautiful summer resorts of old Cape Cod, Marion probably stands pre-eminent in the number and beauty of its summer residences. Everything here seems combined, to cater to the people of artistic and refined tastes. Lying as it does, not far from the nearly completed Cape Cod Canal, within a short distance of the terminus of the steamboat line to Martha's Vineyard and Nantucket, and intersected by numerous automobile roads running from the tip end of Cape Cod down through New Bedford and along the Sound, it needs only this beautiful harbor shown above, to render it one of New England's most delightful summer resorts.



THE SIPPICAN, MARION, MASS.

BUZZARD'S BAY and the surrounding country has long been known as one of the most beautiful summer resort regions in New England. The Sippican Hotel is most delightfully situated in the heart of this most interesting locality, and is patronized by a select clientele in search of a restful summer. Spacious rooms, single and en suite, many with private bath, are beautifully furnished with a view to every comfort and the broad piazzas are always delightful. The cuisine is of unvarying excellence and the service most intelligent.

The surrounding walks and drives are a never-ending delight and golf, tennis, boating, fishing, bathing, base ball, billiards, pool and dancing are among the diversions offered.

Within easy reach of Marion via motor, over the beautiful State roads, are the historic towns of Duxbury, Plymouth, Green Harbor, Marshfield, Falmouth and many others. New Bedford is but 12 miles distant.

Harry T. Miller, Ownership Management.

Also the Woodland Park Hotel, open year round, Auburndale, Mass.



PLYMOUTH ROCK, PLYMOUTH, MASS.

Among all the spots which Massachusetts has preserved in tradition and story, Plymouth Rock probably stands pre-eminent. The view above shows the rock surmounted by a beautiful granite canopy, standing just on the shore of Plymouth Harbor, and overlooked by the quaint old streets, the Burying Ground on the hill, the Old Church, Pilgrim Hall and the beautiful Faith Monument. Not far away, stand the homes of John Alden, Miles Standish, William Bradford and Gov. Winslow. Tourists unnumbered, visit this spot every year, and take their departure filled with the spirit of patriotism and independence which actuated the lives of those who first stepped foot upon this rock.



HOTEL PILGRIM, PLYMOUTH, MASS.

THE above hotel in its architecture, appointments and location, does full honor to the quaint old town of Plymouth, on the shore of whose harbor it is situated. It stands on a commanding bluff, overlooking the entire sweep of coast from Manomet Point to the Gurnet Lights, and the beautiful harbor, with the famous old Puritan town skirting its shores.

The hotel has every appointment to suit the most fastidious, including broad and ample piazzas affording a view in every direction, the finest of rooms, complete in every respect, with steam heat, electric lights, private baths, lounging rooms, smoking rooms, a spacious lobby, which is used for dancing, and a writing room complete in all appointments.

Within easy reach of the hotel, over beautiful automobile roads, are the famous historic shrines of Plymouth, the old homes of the Puritans in Duxbury, the great wireless station at Brant Rock, the old home of Daniel Webster and natural scenery of the very finest.

The grounds of the hotel adjoin those of the Plymouth Country Club, and the courtesy of the club is extended to guests of the hotel.

The best of fishing and sailing can be found here, together with croquet, tennis and all other sports. This hotel is owned by and conducted under the management of the Associated Trust.



SCENES AT NARRAGANSETT PIER—THE CASINO—THE BATHING BEACH



GLADSTONE HOTEL

American and European Plans

Open in June for the Season of 1914

LOCATED at Narragansett Pier, the famous resort for which Nature has done much. Its climate is healthful, cool and dry. Its situation is such that it is within easy reach of the Summer traveler, either by boat or railroad. It is in the Southern part of Rhode Island, on the Atlantic, just at the entrance to Narragansett Bay. Here it has the combined benefits of the wide ocean and the protection of the outlying shore of the Bay.

The Gladstone is a modern, well-equipped, beautiful hotel, with accommodations for three hundred and fifty guests. It contains one hundred and eighty-five bedrooms, many of them with private baths connected. Comfort, breeziness and beauty are combined in the arrangements of the rooms.

Extensive improvements have been made this season, a number of rooms having been equipped with new baths, the most sanitary plumbing, and every modern convenience. The rooms have been redecorated and attractively refurnished throughout. With these improvements and other improvements made during the past few years, there are one hundred rooms having private baths connected, and the Gladstone now offers handsome suites consisting of parlor, one or more sleeping rooms and bath, thus enabling the guests to enjoy the comforts and exclusiveness of home.

A distinct and enjoyable feature of the Gladstone not found at other seashore resorts is four acres of well-kept and beautifully shaded lawns, which surround the building wherein guests will find delightfully cool retreats.

Cuisine famed for its culinary achievements. Write for literature. Orchestra.

Andrew Radel, Owner.

A. L. Smith, Manager.



THE PUBLIC GARDEN — BOSTON

Wherever one hears of Boston, mention is also made of the Public Garden; one is not complete without the other. Located as it is at the junction of Boylston and Arlington streets, and presenting to both thoroughfares its wealth of trees, shrubbery and blossoms, it is indeed in the summer a thing of beauty. In its center lies a charming pond, spanned by a stone bridge, of an architecture in full keeping with its surroundings, and dotted in the season with pleasure boats filled with merry makers. At the height of the season, the display of flowers is remarkable. In the foreground of the above picture stands Ball's equestrian statue of Washington, which dominates the entire garden.

BATCHELDER & SNYDER CO.

Packers, Poultry Dressers

Wholesale Only



Beef, Lamb, Veal, Pork, Poultry, Game, Butter, Cheese, Eggs

Makers of Snyder-Cure Hams and Bacon

47, 49, 51, 53, 55, 57, 59, 61, 63 BLACKSTONE ST., BOSTON



WHITTIER'S BIRTHPLACE, HAVERHILL, MASS.

Lying about two miles out of the busy city of Haverhill, Mass., not far from the shore of the beautiful Merrimack River, stands the little two-story cottage in which the poet Whittier was born. This house which has now been made a historical shrine, is visited yearly by thousands of tourists from all over the country. Here lies the scene of "Snowbound", "The Barefoot Boy", not far away, the grave of the Princess, the brook in which Whittier played when a boy, the Old Covered Bridge across the river, the colonial Peaslee Garrison House, and a number of other places made famous by the Poet. A short distance away is Oak Knoll, where he also lived, as well as Amesbury, a later home.

The interior of the house, filled as it is with historical relics and mementos of the poet, ranks among the first of Massachusetts famous historical shrines.



LEWANDOS

AMERICA'S GREATEST

DYERS CLEANSERS LAUNDERERS

ESTABLISHED 1829

PRINCIPAL BOSTON SHOPS

17 TEMPLE PLACE

284 BOYLSTON STREET

248 HUNTINGTON AVENUE

PRINCIPAL NEW YORK SHOP

557 FIFTH AVENUE

PRINCIPAL PHILADELPHIA SHOP

1633 CHESTNUT STREET

Other Shops Brookline Cambridge Dorchester Roxbury Watertown Waltham Malden Lynn
Salem Lowell Worcester Springfield Fall River Fitchburg Washington Albany Rochester
Hartford New Haven Bridgeport Waterbury Providence Newport Portland

" YOU CAN RELY ON LEWANDOS "



MASSACHUSETTS STATE HOUSE AND THE BREWER FOUNTAIN

Probably the most beautiful section of old Boston Common, is that corner of it bordered by Park Street, and which is dominated at its upper end by the Old Bulfinch front Statehouse with its beautiful golden dome rising above the elms which border the entire street. Added to the natural features of this part of the common is the Brewer Fountain, shown in the above picture, which was presented to the City of Boston a number of years ago by Gardner Brewer, a wealthy resident, whose house was erected on the site of the old Hancock Mansion which stood adjoining the State house. While the citizens of Boston never got over the keen feeling of disappointment occasioned by the destruction of this famous old revolutionary landmark, the loss in some measure, has been atoned for by this beautiful fountain, which in the summer with its innumerable jets of water playing in every direction, makes a delightful spot in the middle ground, as one looks at the Statehouse from Tremont Street.



LADIES' DEPARTMENT

NOYES BROTHERS

127 TREMONT STREET

LADIES' TAILORS

GOWNS FOR AFTERNOON AND EVENING
COATS, SWEATERS AND BLOUSES

TO ORDER AND READY-TO-WEAR

GLOVES AND NECKWEAR



JOHN ALDEN HOUSE, DUXBURY, MASS.

Among the quartette of famous Puritan Houses, the home of John Alden takes a high rank. A plain unpretentious frame house with an old apple tree in the front yard, standing not far from the homes of Miles Standish, Wm. Bradford and Gov. Winslow, and at present the home of Priscilla Alden of the ninth generation, it is a dwelling of which the citizens of the old Bay State are justly proud.



SUMMER AFTERNOON, CORNWALL

PAUL DOUGHERTY, N. A.

R. C. & N. M. VOSE

ESTABLISHED 1841

HIGH CLASS PAINTINGS

EARLY ENGLISH
AMERICAN

BARBIZON
MODERN DUTCH

394 & 396 BOYLSTON STREET
BOSTON



MARBLEHEAD HARBOR

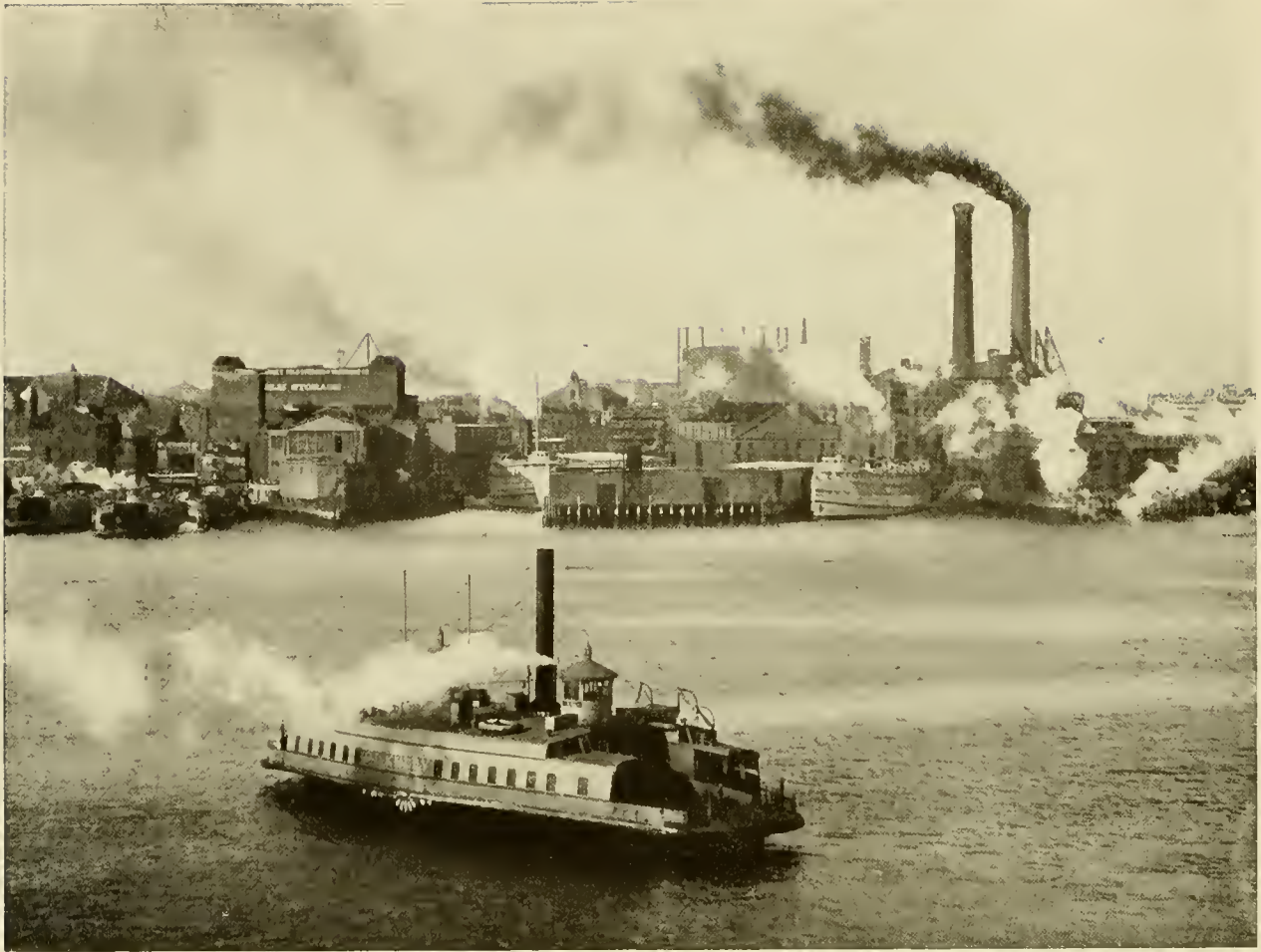
Who, amongst the yachtsmen of the North Atlantic coast, has not seen or heard of famous old Marblehead Harbor with a beauty unsurpassed by any port on the coast. Surrounded on all sides by summer residences within easy reach of the famous old cities of Salem, Portsmouth and Newburyport, it has the added distinction of being in the summer, probably the greatest rendezvous for pleasure yachts in the world. The New York Yacht Club on its annual cruise in August, makes Marblehead harbor its chief stopping place, at which time, it is no uncommon sight to see five hundred yachts gathered here at one time. Some of the most famous yacht races in the country have taken place here, both National and International. Adding to this the famous history of Marblehead with its quaint old legends of colonial times, a description of the North Atlantic coast, leaving out Marblehead Harbor, would be like that of England with London left out.

WHITE ROCK



THE WORLD'S BEST TABLE WATER

WHITE ROCK WATER COMPANY OF N. E.
26 EXCHANGE PLACE, BOSTON, MASS.



BOSTON HARBOR AND THE CITY LOOKING FROM EAST BOSTON

Pre-eminent among the harbors of the New England coast, stands Boston Harbor, a small portion of which is shown in the above photograph. Extending as it does, nine miles from the City proper, to Boston Light, and in the other direction, from Hingham to Winthrop, it embraces a water area of depth and magnitude unexcelled. At the present time one of the greatest docks in the country is finished and a dry dock is to be completed beside it, the largest in the country. With the system of docks now in process of construction and others planned, Boston Harbor in the near future will be probably the finest in the country. Dotted as it is over its entire area with a large number of beautiful islands, and with the picturesque lighthouses at its entrance, one of them among the oldest on the entire Atlantic coast, the traveler who approaches this harbor will get an impression of beauty which he will never forget.



MAIN OFFICE, COURT STREET

WE extend a cordial invitation to summer visitors in New England to avail themselves of the many advantages offered by this institution as a depository for their funds and securities.

One account commands the services of two centrally located and complete banking offices. Accounts may be opened and deposits made by mail.

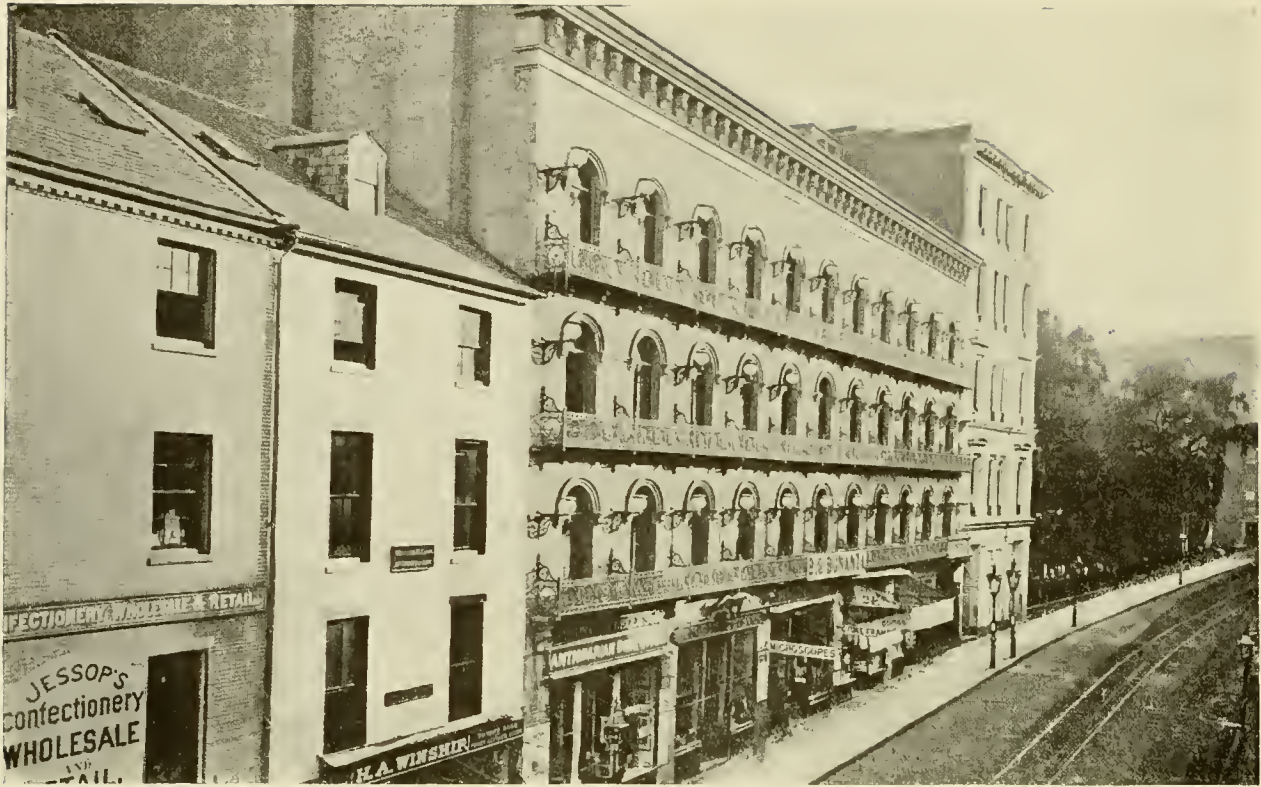
Modern Safe Deposit Vaults at both offices. Arrangements can be made for the storage of silverware or other bulky valuables.

Old Colony Trust Company.

17 COURT STREET

BOSTON

52 TEMPLE PLACE



THE BOSTON MUSEUM, TREMONT ST., DESTROYED IN 1906

Among the old landmarks of Boston, none held a larger place in the affections of the amusement-loving public, than the Boston Museum. Erected in 1846, on the site of several old houses purchased by Moses Kimball to house his collection of curiosities it has been the scene of the triumphs of such notable actors as Edwin Booth, John McCullough, Lawrence Barrett, William Warren, and others too numerous to mention.

Here were produced the famous old plays of theatrical history, such as "Lady Audley's Secret," "The Shaughraun," "The Rivals," many of Shakespeare's Dramas, and others.

About 1906, the old building was taken down to make place for the present Kimball Building. The above picture, taken in 1875, shows some of the old houses of the early century.

WILLIAM H. WINSHIP

(SUCCESSOR TO H. A. WINSHIP)

ESTABLISHED 1842

TRUNKS - BAGS DRESS SUIT CASES

FINE LEATHER GOODS
CHINESE PIGSKIN TRUNKS *for* FOREIGN TRAVEL,
WARDROBE TRUNKS

TELEPHONE 4748 MAIN

16 TREMONT STREET
BOSTON





BAKER'S ISLAND LIGHTS, BAKER'S ISLAND

Lying off the coast a short distance from the mouth of Salem harbor, stand the Twin Sentinel Lights, shown in the above picture. These beautiful beacons, lying as they do, midway between Boston Light and those of Thatcher's Island, and standing guard over the famous harbors of Gloucester, Salem, Beverly and Marblehead with their wealth of historical resorts, and surrounded by waters which in the summer are dotted with pleasure fleets of the whole north shore, present a picture of marine architecture which cannot be excelled on the coast of the good old Bay State.



MACULLAR PARKER COMPANY

400 Washington Street

Boston, Massachusetts

CORDIALLY INVITE YOU TO INSPECT THEIR STOCK
OF FINE CLOTHING FOR MEN AND BOYS, ALL MADE
ON THE PREMISES IN THEIR OWN WORKROOMS
BY OLD AND EXPERIENCED WORKMEN



OLD GOODHUE HOUSE, DANVERS, MASS.

This old house, which now unfortunately is but a memory, having been burned in the dead of a winter's night several years ago, presents perhaps as beautiful a picture for an illustration of Whittier's *Snowbound* as could ever be found. While its history is very humble, it stood as one of Danvers' oldest houses, and surrounded as it was, by the birthplace of Israel Putnam, the Rebecca Nurse House, the famous old Tea Party House, the Jacobs House, scene of one of the Witchcraft Delusions and the King Hooper House, once occupied by one of the colonial governors of Massachusetts, it was a sad loss to the old Bay State.



PAGE & SHAW CANDIES

THE CANDY OF EXCELLENCE

PACKED IN BOXES AT
ONE DOLLAR PER POUND

OUR RETAIL STORES

9 West Street, Boston, Mass.
18 State Street, Boston, Mass.
439 Boylston Street, Boston, Mass.
254 Essex Street, Salem, Mass.
50 Central Square, Lynn, Mass.
362 Fifth Avenue, New York City
553 Fifth Avenue, near 45th Street,
New York City.
Vanderbilt Hotel, New York City

Empire Building, 71 Broadway
New York City.
101 South 13th St., Philadelphia, Pa.
8 South La Salle Street, Chicago, Ill.
120 South Michigan Ave., Chicago, Ill.
610 St. Catherine Street, West,
Montreal, Can.
Transportation Building,
Montreal, Can.

SOLD IN ALL PRINCIPAL CITIES

JOHN C. PAIGE & CO. INSURANCE

AUTOMOBILE

FIRE AND LIABILITY
PROPERTY DAMAGE AND
COLLISION

BAGGAGE

FIRE, MARINE AND
THEFT FLOATERS

FIRE, BURGLARY,
LIABILITY,
MARINE,

FIDELITY AND
CONTRACT BONDS

LIFE & ACCIDENT



65 KILBY STREET
BOSTON

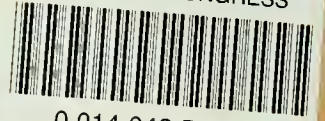
LIBRARY OF CONGRESS



0 014 042 554 0



LIBRARY OF CONGRESS



0 014 042 554 0 •

Hollinger Corp.
pH 8.5